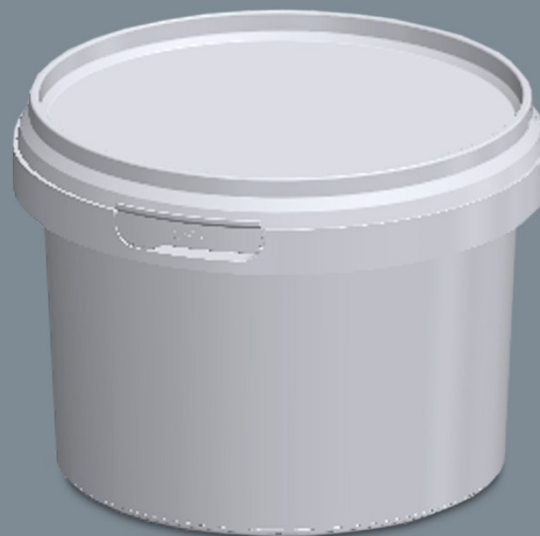


280ml Round Food Packaging Container

ROUND SERIES



Container

Product code	Tub: MP-280RNDCRC Lid: MP-LID94RNDCRC
Description	280ml round tub and lid
Brimful volume	346 ml
ISO volume	318 ml
Tamper evident	Yes
Material	Polypropylene (tub & lid)
Dim (Ø dia x height)	Ø 94 x 68mm (Ø at base 80mm)
Weight	Tub 10.8 grams / lid 4.3 grams

Performance

Standard temperature	0°C to 40°C
Hot fill temperature	40°C to 85°C *
Cold fill temperature	-20°C to 0°C *
Shelf life	12 months after delivery
Static load on bottom pail	Maximum 12 Kg at 20°C **

Decoration

Tub IML	Yes
Lid IML	Yes
Colours	White, clear (other colours on request)

Palletisation

Tub quantity per pallet	12,480
Tub units per box	624
Pallet size	1200 x 1000 x 1940mm
Lid quantity per pallet	33,120
Lid units per box	2,208
Pallet size	1200 x 1000 x 1314mm

Compatibility

Some chemicals, and process parameters, can affect the integrity of the container. The buyer must undertake testing and approval for the container's suitability for the product or application.

Regulatory

Products are manufactured in a BRC and are compliant to 1935/2004, 2023/2006 and 10/2011 legislations.

Manufactured in 100% FOOD GRADE RECYCLED MATERIAL

*Special blends and additives are available for non-standard conditions.

**Stacking relies on various factors, data is for indication only

Standard tolerances +/- 5%



Manufacturers and Distributors of high quality plastic containers to the commercial sector

Metaplast Ltd

Unit A1, Ground Floor, Meridian House
Meridian Business Park, Norwich NR7 0TA

Tel: +44 (0)1508 495342

sales@metaplast.co.uk

www.metaplast.co.uk